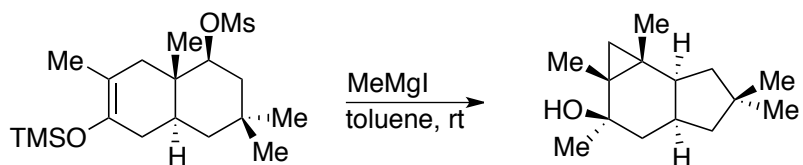
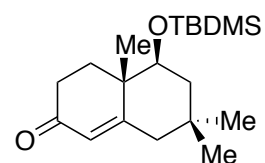


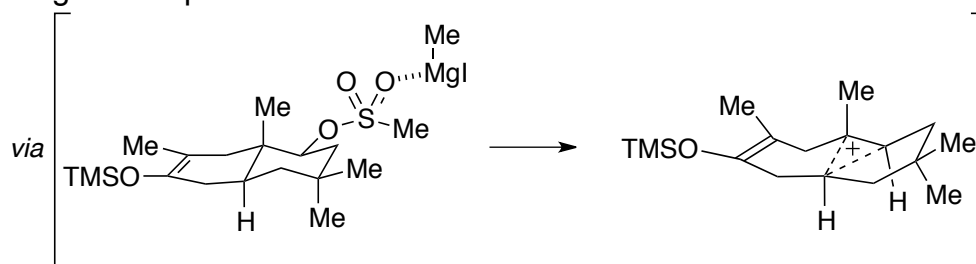
**A Novel Route to the Marasmane Skeleton***Problem:*

- 1) Propose a mechanism for this transformation.
- 2) Envisage a sequence to prepare the starting silyl enol ether from simple substrates. You may consider the following intermediate:

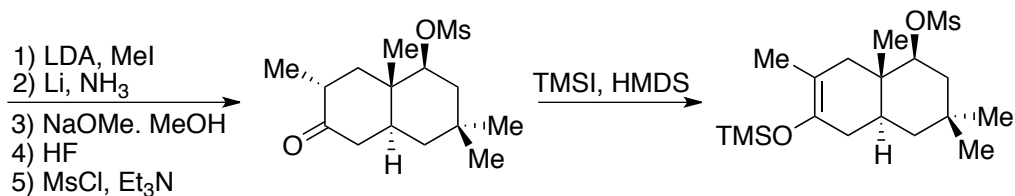
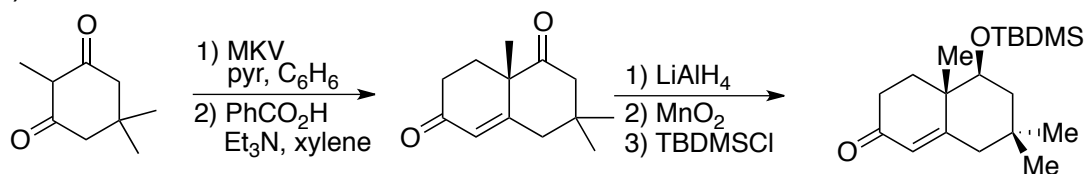


**Solution:**

1) MeMgI in an apolar solvent is a Lewis acid



2)



**References:**

Original paper: R. P. L. Bell, J. B. P. A. Wijnberg, A. De Groot, *J. Org. Chem.* **2001**, *66*, 2350–2357.